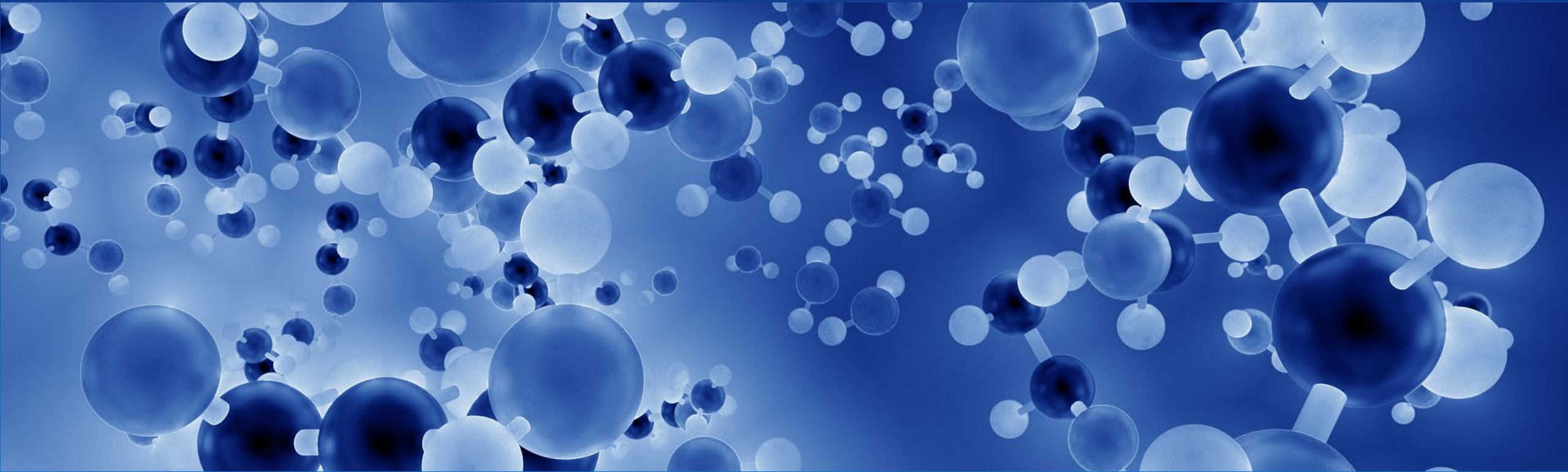




Australian Government

Department of Health

Australian Industrial Chemicals
Introduction Scheme



Categorisation example

Paint ingredient, no available hazard information

May 2020



Introduction categories

If your chemical introduction is not listed on the Inventory



Listed

- The chemical is on the Inventory
- Can be introduced if it's within the terms of the Inventory listing
- Keep records



Exempted

- It's a very low-risk introduction
- Submit a once-off declaration **after** you introduce
- Keep records



Reported

- It's a low-risk introduction
- Submit a once-off report **before** you introduce
- Keep records



Assessed

- It's a medium- to high-risk introduction
- Apply for an assessment
- Assessment certificate needed **before** you introduce
- Keep records

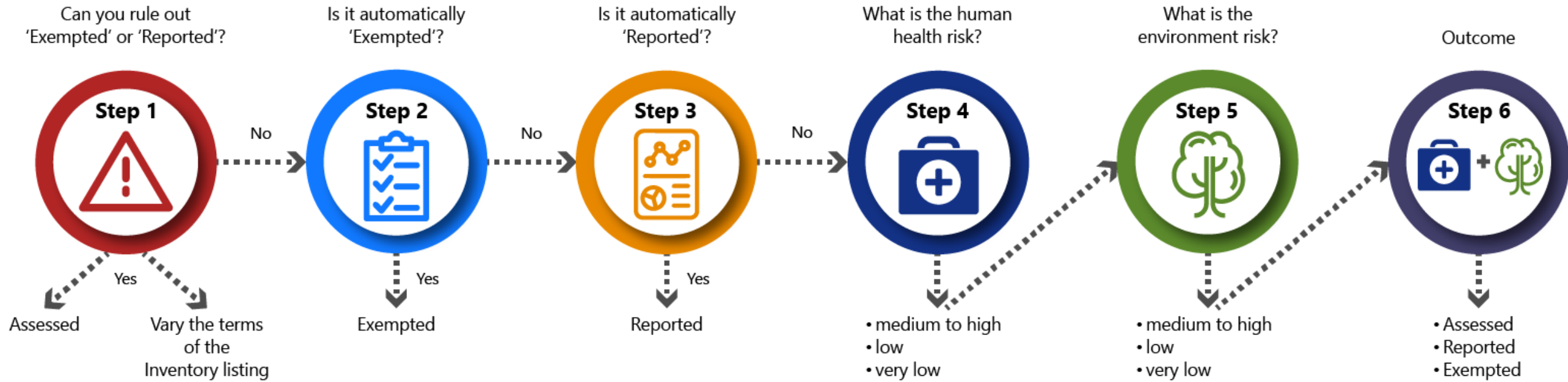


Commercial Evaluation Authorisation

- Determine the chemical's commercial potential
- Apply for an authorisation
- Commercial Evaluation Authorisation needed **before** you introduce
- Keep records



Work out your introduction category

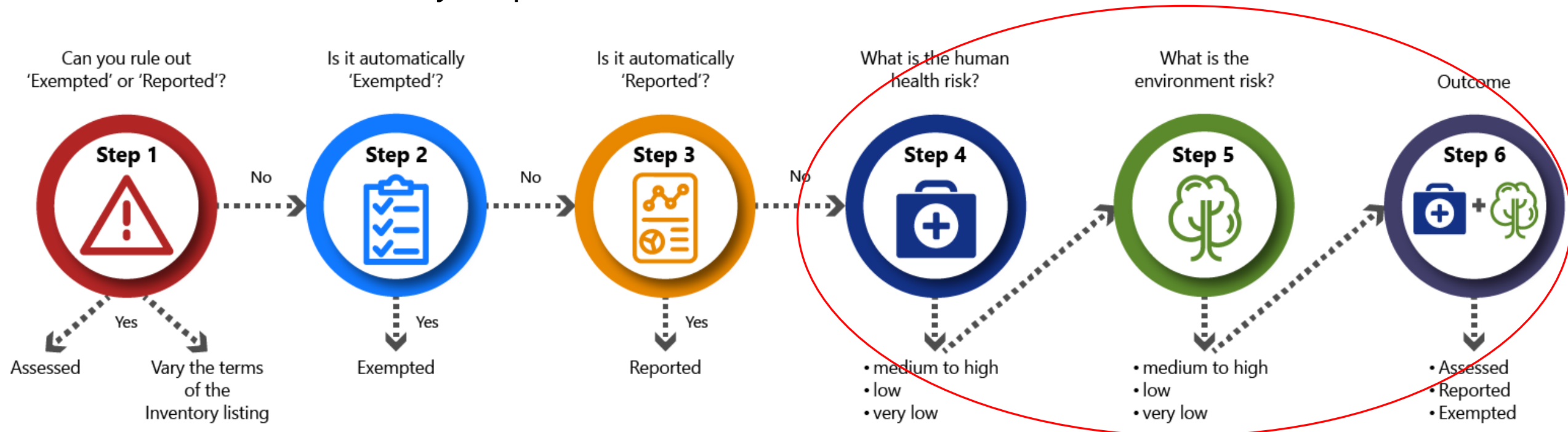


Outcome = your introduction category

- Exempted OR
- Reported OR
- Assessed

Categorisation example

- 250 kg of a paint ingredient imported and end use at 10% concentration
 - No hazard information available
 - Not covered by Steps 1 – 3





Step 4

What is the indicative human health risk?

- **Step 4.1** – Is it medium to high?
 - Chemical with sequence of 4 to 20 fully fluorinated carbon atoms? NO
 - Persistent polyhalogenated organic chemical > 100kg/year? NO
 - Certain chemical at the nanoscale? NO
- **Step 4.2** – Is it low?
 - Internationally assessed for human health and other criteria met? NO



Step 4

What is the indicative human health risk?

- **Step 4.3** – Human health exposure band?
 - Human health categorisation volume (HHCV)
 - introduction volume (IV) = 250kg
 - exposure reduction factor (ERF) = 0.1
 - $HHCV = 250\text{kg} \times 0.1 = 25\text{kg}$
 - Human health exposure band is **2** if
 - the HHCV for the chemical does not exceed 25kg
 - no designated kind of human exposure



Step 4

What's the indicative human health risk?

- **Step 4.4** – Human health hazard characteristics?
- Human health hazard bands that do not apply?
 - no information available about Hazard Band C hazards
 - chemical **not** listed on the 'List of chemicals with high hazards for categorisation'

		Human health exposure band			
		1	2	3	4
Human health hazard band	C	Low risk	Medium to high risk	Medium to high risk	Medium to high risk
	B	Very low risk	Very low risk	Low risk	Medium to high risk
	A	Very low risk	Very low risk	Low risk	Low risk
	Not A, B, or C	Very low risk	Very low risk	Very low risk	Very low risk



Step 4

What's the indicative human health risk?

- **Step 4.5** – Indicative human health risk?
- Indicative human health risk **is very low**

		Human health exposure band			
		1	2	3	4
Human health hazard band	C	Low risk	Medium to high risk	Medium to high risk	Medium to high risk
	B	Very low risk	Very low risk	Low risk	Medium to high risk
	A	Very low risk	Very low risk	Low risk	Low risk
	Not A, B, or C	Very low risk	Very low risk	Very low risk	Very low risk



Step 5

What's the indicative environment risk?

- **Step 5.1** - Is it medium to high?
 - Chemicals with a sequence of 4 to 20 fully fluorinated carbon atoms? NO
 - Persistent polyhalogenated organic chemicals > 100kg/year? NO
 - Certain chemicals at the nanoscale? NO
 - Persistent gases > 100kg/year? NO
 - Organotin chemicals > 10kg/year? NO
- **Step 5.2** - Is it low?
 - Internationally assessed for environment and other criteria met? NO



Step 5

What's the indicative environment risk?

- **Step 5.3** – Environment exposure band?
- Environment categorisation volume (ECV)
 - introduction volume (IV) = 250kg
 - release reduction factor (RRF) = 0.05
 - $ECV = RRF \times IV = 250\text{kg} \times 0.05 = 12.5\text{kg}$
- Environment exposure band is **1** if the introduction of the chemical
 - does not involve a designated kind of release into the environment
 - the volume is $\leq 25\text{kg}$



Step 5

What's the indicative environment risk?

- **Step 5.4** – Environment hazard characteristics?
- Environment hazard bands that do not apply?
 - no information available about Hazard Band D or C hazards
 - chemical not listed on the 'List of chemicals with high hazards for categorisation'

		Environment exposure band			
		1	2	3	4
Environment hazard band	D	Medium to high risk	Medium to high risk	Medium to high risk	Medium to high risk
	C	Low risk	Low risk	Medium to high risk	Medium to high risk
	B	Very low risk	Low risk	Low risk	Medium to high risk
	A	Very low risk	Very low risk	Low risk	Low risk
	Not A, B, C or D	Very low risk	Very low risk	Very low risk	Very low risk



Step 5

What's the indicative environment risk?

- **Step 5.5** – Indicative environment risk?
- Indicative environment risk is **Very low**

		Environment exposure band			
		1	2	3	4
Environment hazard band	D	Medium to high risk X	Medium to high risk	Medium to high risk	Medium to high risk
	C	Low risk X	Low risk	Medium to high risk	Medium to high risk
	B	Very low risk	Low risk	Low risk	Medium to high risk
	A	Very low risk	Very low risk	Low risk	Low risk
	Not A, B, C or D	Very low risk	Very low risk	Very low risk	Very low risk



Step 6

What is your introduction's highest indicative risk?

- Use results from Step 4 (human health) and Step 5 (environment)

Your introduction category is Exempted

		Indicative human health risk		
		Very low	Low	Medium to high
Indicative environment risk	Very low	Exempted	Reported	Assessed
	Low	Reported	Reported	Assessed
	Medium to high	Assessed	Assessed	Assessed



Australian Government

Department of Health

Australian Industrial Chemicals
Introduction Scheme

Thank you!
