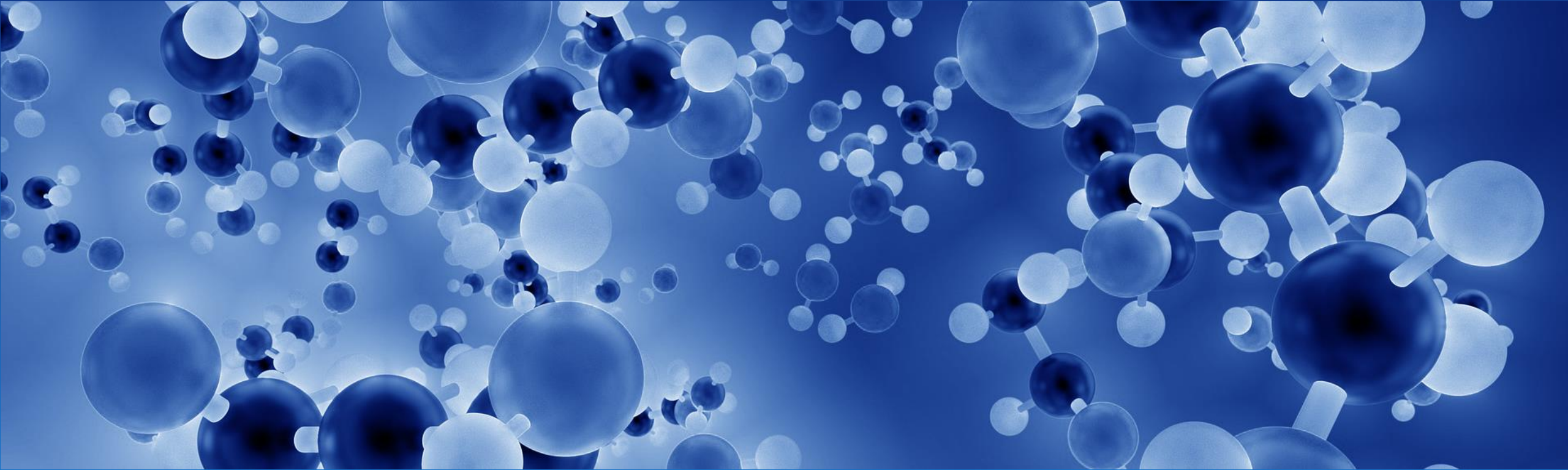




Australian Government

Department of Health

Australian Industrial Chemicals
Introduction Scheme



Overview of Categorisation

What is your introduction category?

April 2020



Agenda

Categorisation videos

- **Video 1:** Overview of categorisation
- **Video 2:** Step-by-step categorisation (Steps 1 – 3)
- **Video 3:** Step-by-step categorisation (Steps 4 – 6)
- **Later videos:** Categorisation examples



Australian Government

Department of Health

Australian Industrial Chemicals
Introduction Scheme

Overview of categorisation

[Click to edit subtitle](#)

A white rectangular box with a thin white border and a small white square in the top right corner. Inside the box, the number '01' is written in a large, bold, white sans-serif font.

01



Categorise each chemical introduction



Introduction categories

If your chemical introduction is not listed on the Inventory



Listed

- The chemical is on the Inventory
- Can be introduced if it's within the terms of the Inventory listing
- Keep records



Exempted

- It's a very low-risk introduction
- Submit a once-off declaration **after** you introduce
- Keep records



Reported

- It's a low-risk introduction
- Submit a once-off report **before** you introduce
- Keep records



Assessed

- It's a medium- to high-risk introduction
- Apply for an assessment
- Assessment certificate needed **before** you introduce
- Keep records



Commercial Evaluation Authorisation

- Determine the chemical's commercial potential
- Apply for an authorisation
- Commercial Evaluation Authorisation needed **before** you introduce
- Keep records



Categorisation: based on risk

Deciding between Exempted, Reported and Assessed

Risk of introduction of a chemical = hazard (effect of chemical on humans or environment) x exposure (amount of chemical humans or environment come in contact with from introduction and use)

Introductions are categorised, NOT chemicals

Very low risk

→ Exempted
(once-off declaration after introduction)

Low risk

→ Reported
(once-off report before introduction)

Medium to high risk

→ Assessed
(pre-introduction assessment and approval)



Pre-intro assessment and payment

ICNA Act

Exemptions

- R&D
- Transshipment
- Non-cosmetic <100kg
- Cosmetic <100kg
- Cosmetic <1%

Permits

- LVC100
- LVC1000
- CEC
- CUP
- EOP
- Permit renewal
- EIP

Certificates

- PLC (until recently)
- LTD
- STD
- EX
- Self assessment



IC Act

Introduction categories

If your chemical introduction is not listed on the Inventory



Listed

- The chemical is on the Inventory
- Can be introduced if it's within the terms of the Inventory listing
- Keep records



Exempted

- It's a very low-risk introduction
- Submit a once-off declaration **after** you introduce
- Keep records



Reported

- It's a low-risk introduction
- Submit a once-off report **before** you introduce
- Keep records



Assessed

- It's a medium- to high-risk introduction
- Apply for an assessment
- Assessment certificate needed **before** you introduce
- Keep records



Commercial Evaluation Authorisation

- Determine the chemical's commercial potential
- Apply for an authorisation
- Commercial Evaluation Authorisation needed **before** you introduce



Information to work out your introduction category

Must have

- Chemical identity

Might need

- Introduction volume
- Introduction concentration
- End use concentration
- End use
- Hazard information
- Specified class of introduction

Useful to have or know

- Whether it is a polymer
- The molecular weight of your polymer
- International assessment of your chemical

If you don't have this information, you might need to contact your supplier

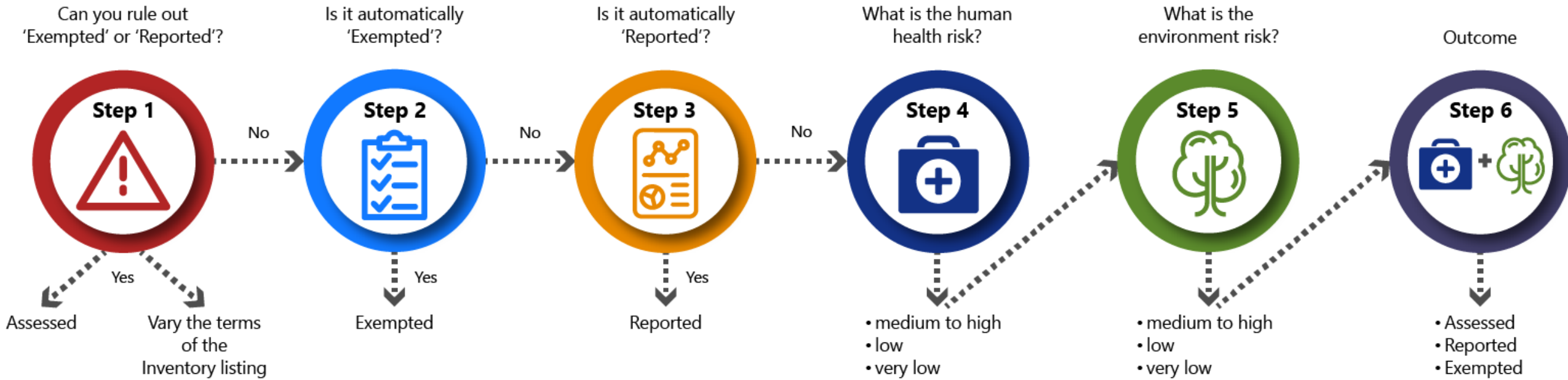


Step 0 – Check the Inventory

- Is your chemical on the Inventory?
 - NO – go to Step 1 (next slide)
 - YES – go to next question
- Is your **introduction** within the terms of the Inventory listing?
 - YES – listed introduction category
 - NO – not a listed introduction. For more details, see the Inventory video



Work out your introduction category



Outcome = your introduction category

- Exempted OR
- Reported OR
- Assessed



Australian Government

Department of Health

Australian Industrial Chemicals
Introduction Scheme

Thank you!